

## Overview

<b>Product name</b>	Anti beta Actin antibody [mPro7] - Loading Control
<b>Description</b>	Mouse monoclonal [mPro7] to beta Actin
<b>Specificity</b>	Does not cross-react with adult cardiac, smooth, or skeletal muscle actin.
<b>Tested applications</b>	WB, IHC, ICC/IF, FC, IP, ELISA
<b>Species reactivity</b>	Reacts with: Human, Mouse, Rat, Hamster, Zebrafish. Other species are not tested, Please decide the specificity by homology.
<b>Immunogen</b>	Synthetic peptide conjugated to KLH derived from within residues 1 - 100 of Human beta Actin.
<b>Positive control</b>	This antibody gave a positive signal in the following whole cell lysates: A431; HEK293; NIH3T3.
<b>General notes</b>	The concentration of this antibody is batch dependent.

## Properties

<b>Form</b>	Liquid
<b>Storage instructions</b>	Store at +4°C short term (1-2 weeks). Upon delivery aliquot. Store at -20°C long term. Avoid freeze / thaw cycle.
<b>Storage buffer</b>	pH: 7.40, Preservative: 0.02% Sodium azide, Constituent: PBS
<b>Concentration</b>	100 µg at 1 mg/ml
<b>Purity</b>	IgG fraction
<b>Clonality</b>	Monoclonal
<b>Clone number</b>	mPro7
<b>Isotype</b>	IgG2b

## Applications

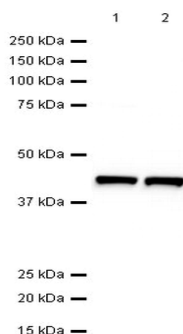
The application notes include recommended starting dilutions; optimal dilutions/concentrations should be determined by the end user.

<b>WB</b>	1/5000 - 1/50000.
<b>IHC</b>	1/20 - 1/200.
<b>IF</b>	1/20 - 1/200.
<b>IP</b>	1/5000 - 1/50000.
<b>FC</b>	Use at an assay dependent concentration.

## Target

<b>Relevance</b>	Actins are highly conserved proteins that are involved in various types of cell motility and are ubiquitously expressed in all eukaryotic cells.
<b>Alternative names</b>	ACTB antibody, ACTB_HUMAN antibody, Actin antibody, Actin cytoplasmic 1 antibody, b actin antibody, b-actin antibody, Beta cytoskeletal actin antibody, Beta-actin antibody, etc.

## Anti beta Actin antibody [mPro7] - Loading Control images



**All lanes** : Anti beta Actin antibody [mPro7] - Loading Control (PMC201) at 1/10000 dilution

**Lane 1** : HeLa (Human epithelial carcinoma cell line) Whole Cell Lysate.

**Lane 2** : NIH 3T3 (Mouse embryonic fibroblast cell line) Whole Cell Lysate.

Lysates/proteins at 10 µg per lane.

**Western blot** - Anti beta Actin antibody [mPro7]  
- Loading Control (PMC201)